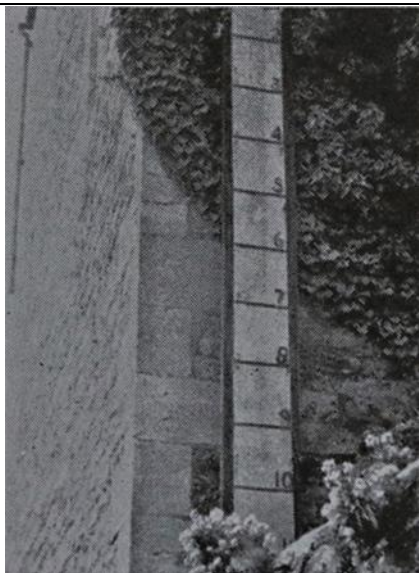


Quiz - Where in Malmesbury?

Gordon Williams has been looking at Malmesbury past and present.

It's carnival time! What do you make of this children's quiz, taken from the 1957 carnival programme? Events were less frantic back then. It's entitled "Do You Know Your Malmesbury?" Well, I thought I did but there were 12 photos in all and I could only identify 8; so here they are; answers overleaf. It's been 65 years, of course, fittings change and buildings are altered. So good luck, happy hunting and enjoy the carnival!



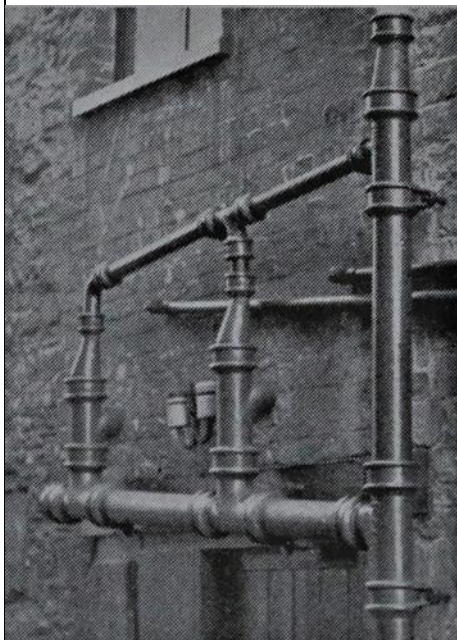
1.



2.



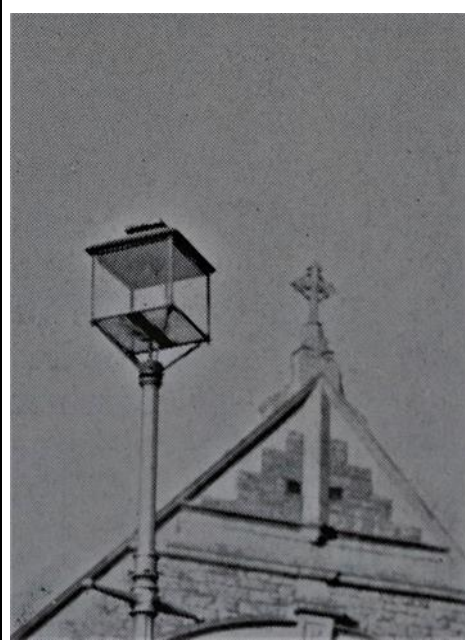
3.



4.



5.



6.



7.



8.

Answers



1. Old Water Tower



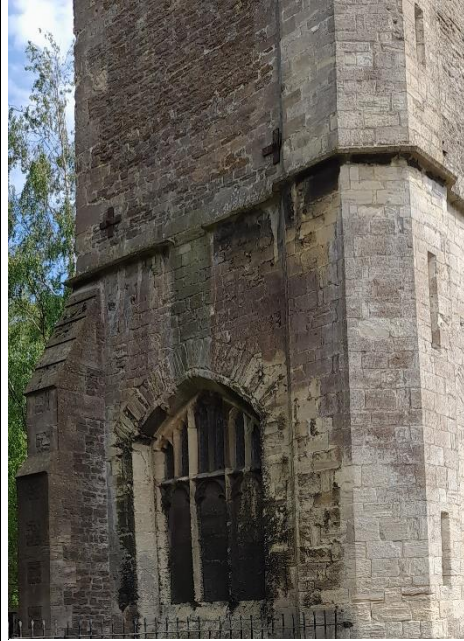
2. Old Reading Room - Silver St



3. Emery then Tanner's Bakery



4. Oliver's Lane



5. St Paul's Steeple



6. Primitive Methodist Chapel



7. Gable House



8. Town Bridge Gates